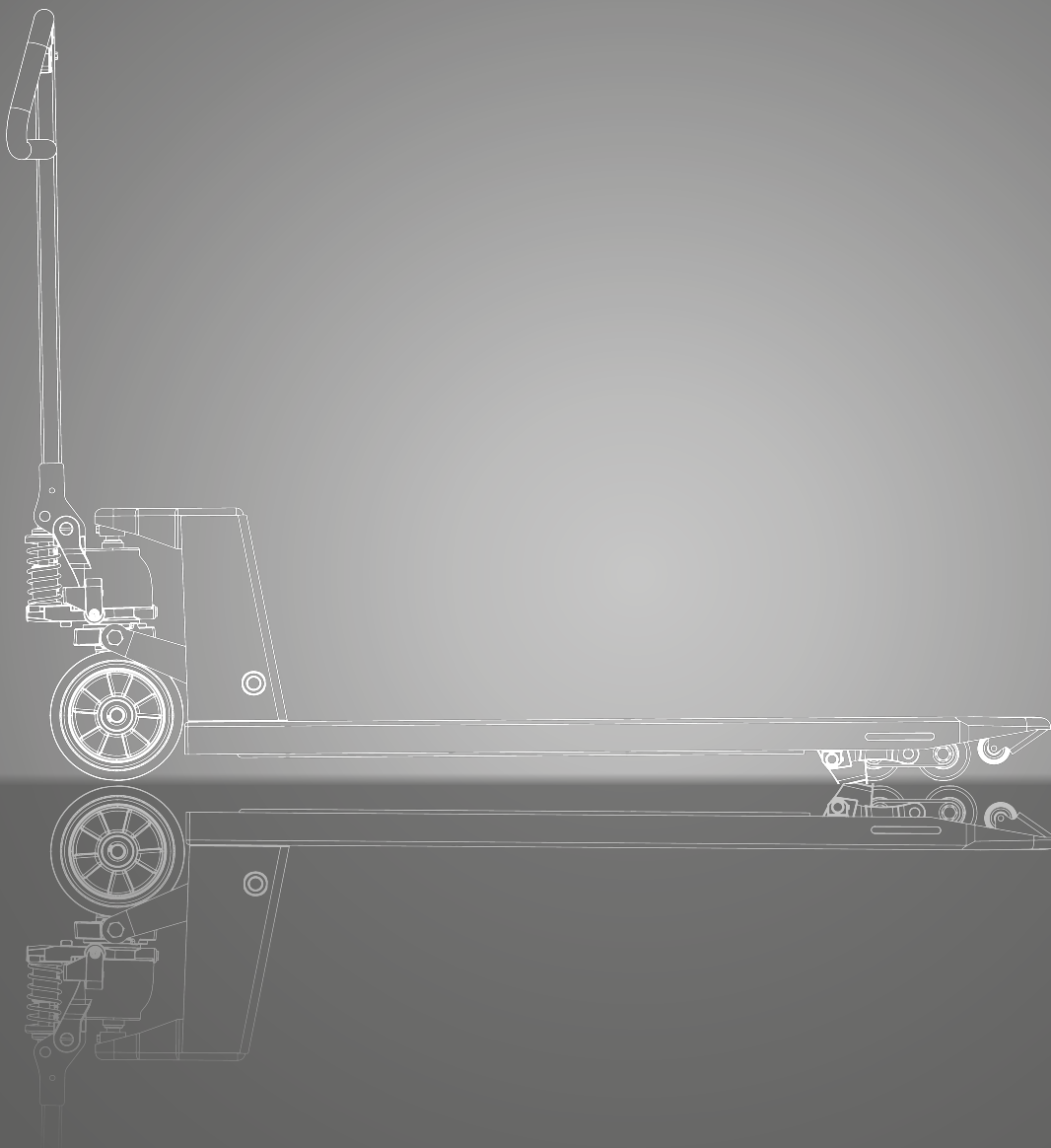


HPT Premium

CLARK Premium Hand Pallet Truck
2.500 kg



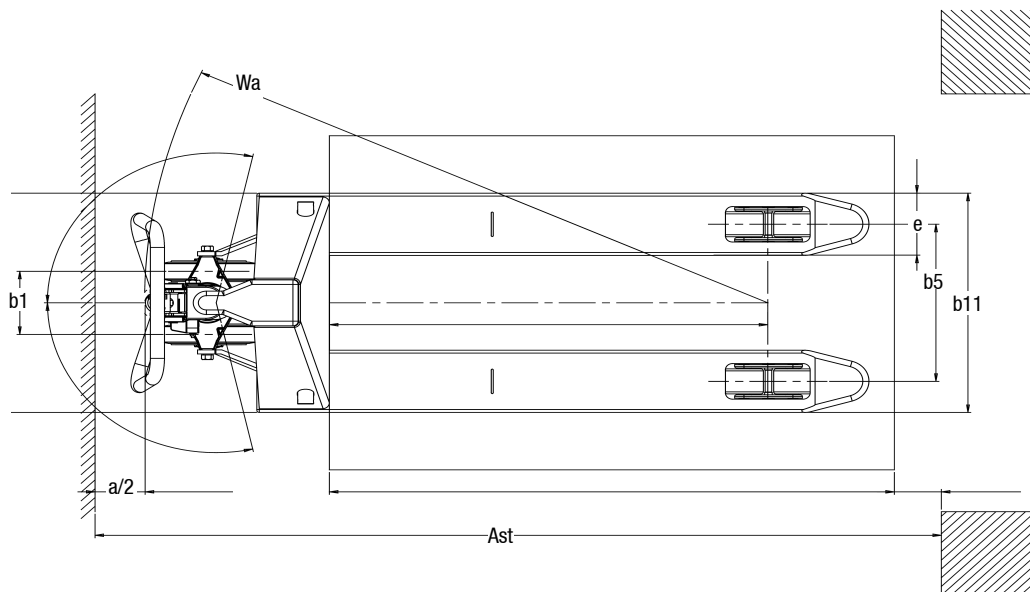
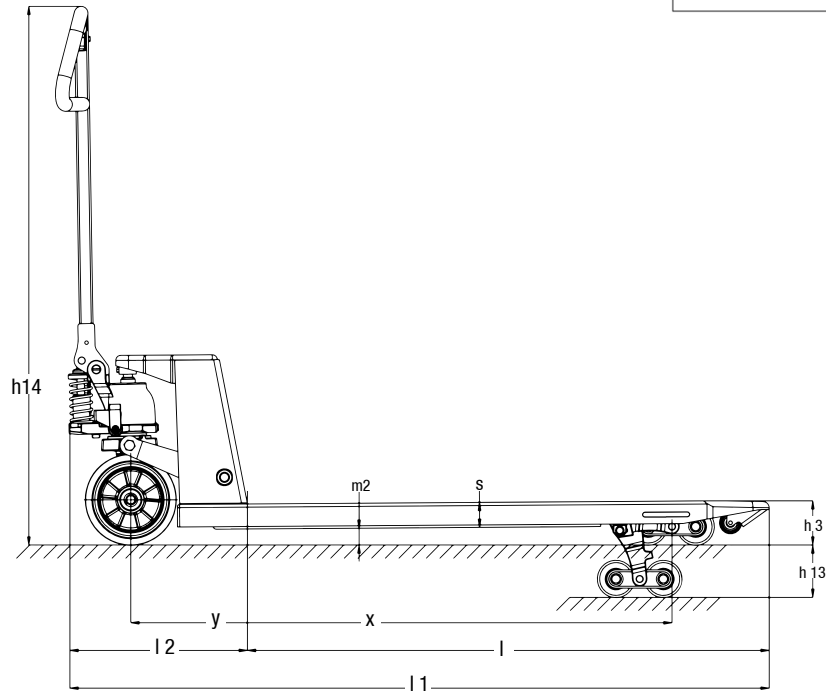
DIMENSIONS

HPT Premium

$$R_h = \sqrt{x^2 + \left(\frac{b_{12}}{2}\right)^2}$$

$$A_{st} = W_a + l_6 - x + a \quad \text{if } R_h < W_a$$

$$A_{st} = R_h + l_6 - x + a \quad \text{if } R_h > W_a$$



For corresponding data see
Specification Chart.

SPECIFICATIONS

Product Specification acc. to VDI 2198

1.1 Manufacturer (Abbreviation)		CLARK
Specifications	1.2 Manufacturer's designation	HPT Premium
	1.3 Drive	Manual
	1.4 Operator type	Hand
	1.5 Rated capacity/rated load	Q (kg) 2.500
	1.6 Load centre distance	c (mm) 600
	1.8 Load distance	x (mm) 932
	1.9 Wheelbase	y (mm) 1.192
Weight	2.1 Service weight	kg 63
	2.2 Axle loading, laden rear	kg 1.825
	2.2 Axle loading, laden front	kg 738
	2.3 Axle loading, unladen rear	kg 21
	2.3 Axle loading, unladen front	kg 42
Tyres, Chassis	3.1 Tyres: Drive wheel	Rubber
	3.1 Tyres: Load wheel	Polyurethan
	3.2 Tyre size, front	200 x 45
	3.3 Tyre size, rear	82 x 60
	3.5 Wheels, number front/rear	2 / 4
	3.6 Tread, front	b10 (mm) 155
	3.7 Tread, rear	b11 (mm) 375
Dimensions	4.4 Lift	h3 (mm) 115
	4.4 Lift height	h3 + h13 (mm) 200
	4.9 Tiller arm height	h14 (mm) 1.185
	4.15 Height, lowered	h13 (mm) 85
	4.19 Overall length	l1 (mm) 1.550
	4.20 Length to face of forks	l2 (mm) 400
	4.21 Overall width	b1 (mm) 525
	4.22 Fork dimensions	s • e • l (mm) 55 x 150 x 1.150
	4.25 Distance between fork-arms	b5 (mm) 525
	4.32 Ground clearance, centre of wheelbase	m2 (mm) 30
	4.33 Aisle width for pallets 1.000 x 1.200 sideways	Ast (mm) 1.850
4.34 Aisle width for pallets 800 x 1.200 lengthways	Ast (mm) 2.050	
4.35 Turning radius	Wa (mm) 1.367	

All data refer to trucks in standard design.

Performance may vary + 5 % and - 10 % due to motor and system efficiency tolerance. The performance shown represents nominal values which may be obtained under typical operating conditions of a machine. CLARK products and specifications are subject to change without notice.

PRODUCT DESCRIPTION



HPT Premium

The HPT Premium hand pallet truck is ideal for transporting goods over short distances. Professionals especially appreciate the new tiller shape. Thanks to this and the smooth-running hydraulics, the device can be moved ergonomically and without much effort. The powder-coated frame ensures high stability, so that the HPT Premium guarantees safe and efficient transport of goods.

High stability and easy operation

- Equipped with pallet entry and exit rollers
- Smooth running during moving, lifting and lowering
- The maximum steering angle of 205° allows easy maneuvering even in confined spaces
- Different fork lengths and roller designs available

Durable and robust

- The robust frame with high-quality powder coating guarantees a long service life
- Robust drawbar connection with two fully welded connections, which are also provide high stability for the toughest applications

Equipment		HPT Premium
Pump	Without Quicklift	•
	With Quicklift	X
Drive Wheel	Nylon – Commonly used standard in the industry	•
	Poly – Very quiet running for all types of applications	X
	Rubber – Good grip even on wet / slippery floors	X
Load Wheel	Nylon	•
	Poly	X

• = Serienausstattung; x = Option

EQUIPMENT VARIANTS

No.	Designation*	Drive Wheel	Load Wheel Type	Load Wheel
1	HPT Premium RTP	Rubber	Tandem	Poly
2	HPT Premium RTP QL	Rubber	Tandem	Poly
3	HPT Premium RTN QL	Rubber	Tandem	Nylon
4	HPT Premium PTP	Poly	Tandem	Poly

Variant No.1 = Standard

***HPT** = Hand pallet truck, **Premium** = Model name, **R** = Rubber, **P** = Poly, **T** = Tandem load wheel, **S** = Single load wheel, **QL** = Quicklift

CLARK Europe GmbH
 Dr.-Alfred-Herrhausen-Allee 33
 47228 Duisburg/ Germany
 Tel.: +49 (0)2065 499 13-0
 Fax: +49 (0)2065 499 13-290
 E-mail: Info-europe@clarkmheu.com
 www.clarkmheu.com

Dealer: